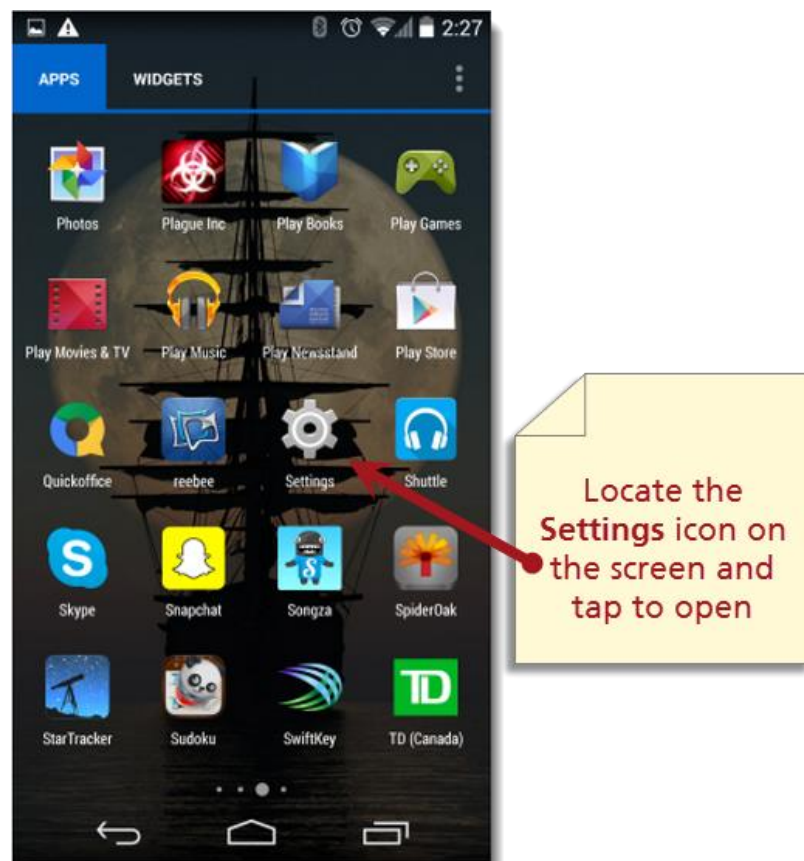


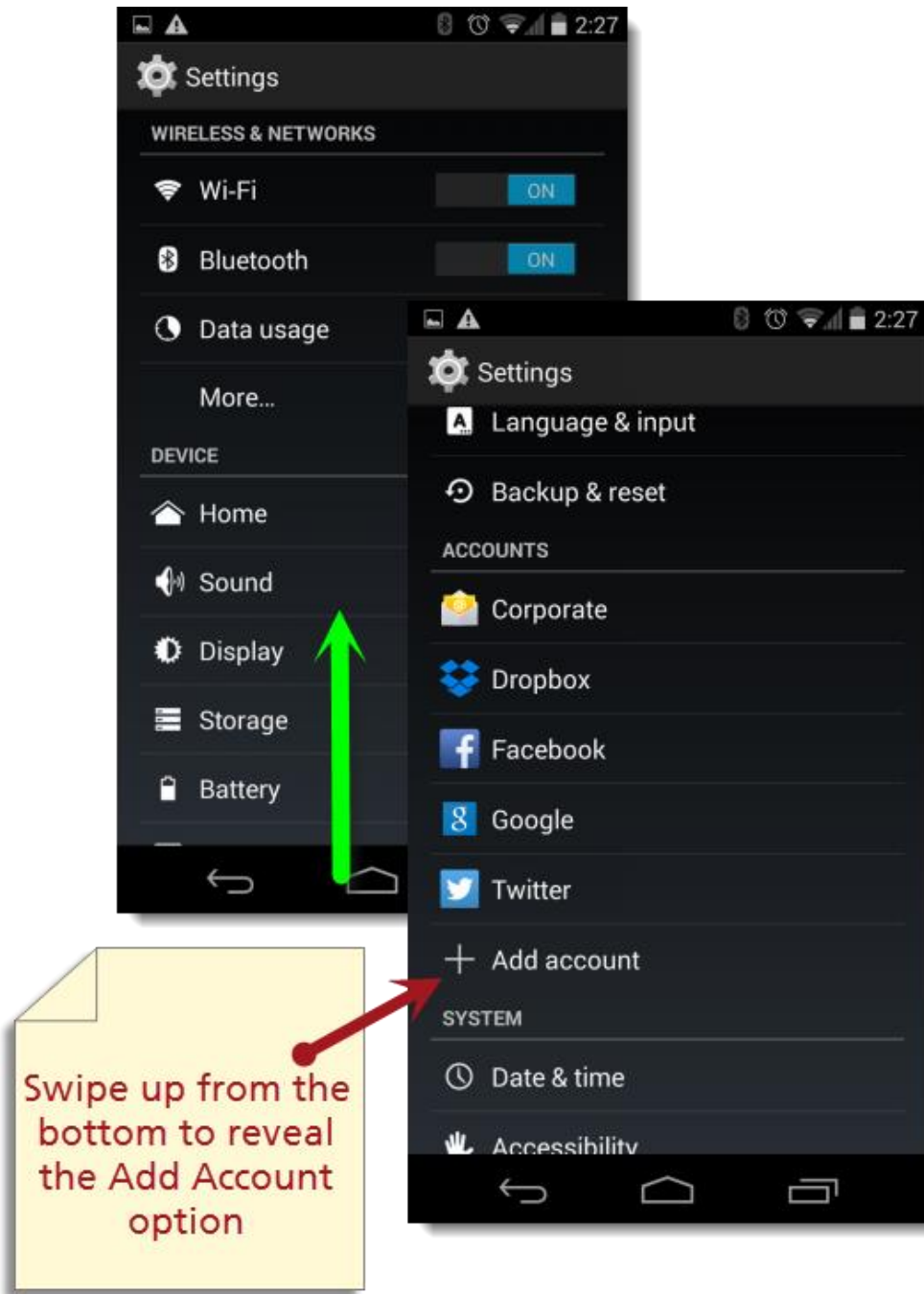
## MacMail – How To Configure Android

**NOTE:** Depending on your device, your screens, icons and options may differ slightly from the example below.

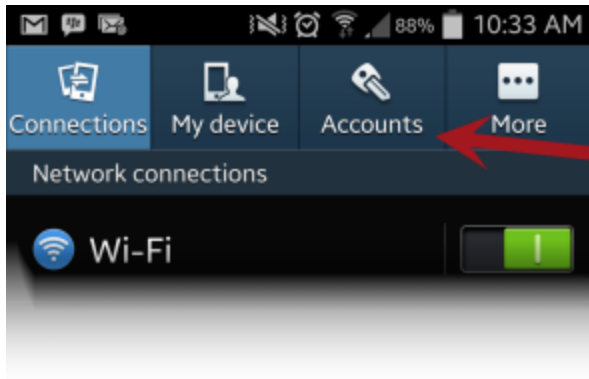
1. Open **Settings** on your Android. Locate the icon on the screen and tap.



2. Adding an Account. Find this option either by swiping up on your android, or locating the option in tabs at the top of the screen.



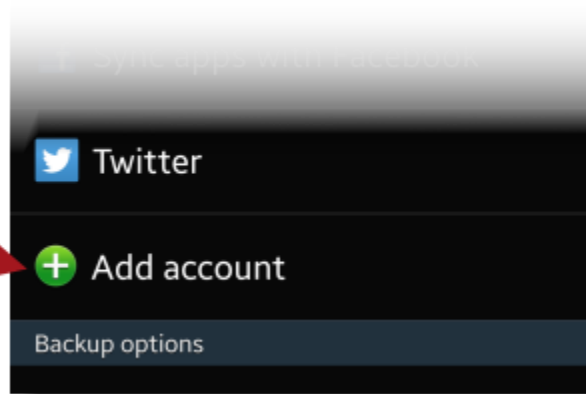
Or if you have tabs across the top, tap on the **Accounts** tab



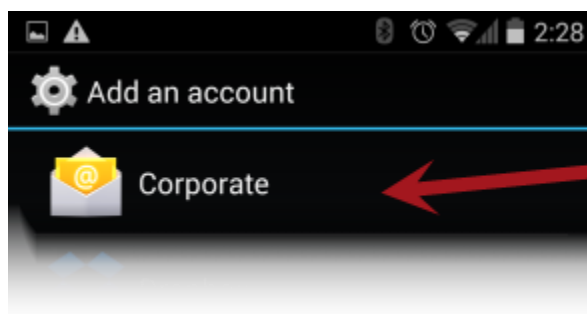
Tap on Accounts in the tab section

3. Tap on the **Add Account** in the **Options**

Tap on Add Account



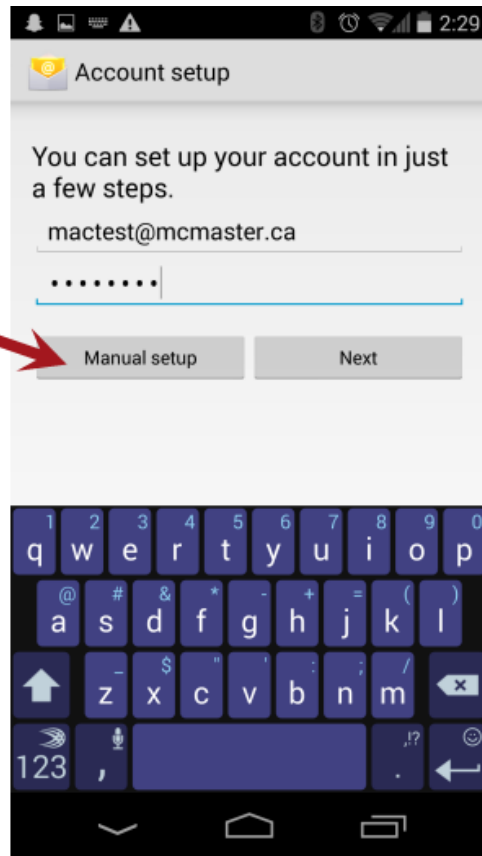
4. Choose Corporate from the options



Choose Corporate

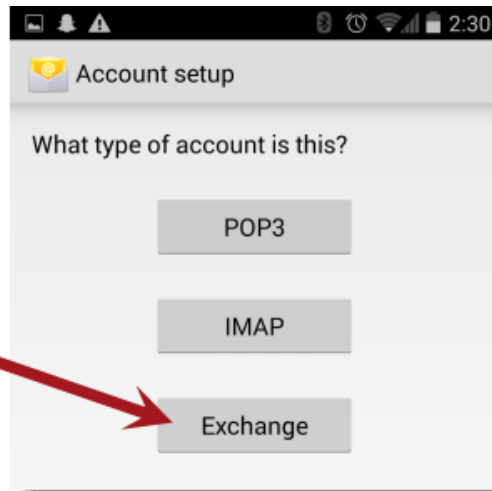
Fill out the fields and choose Manual setup from the buttons

Choose Manual setup

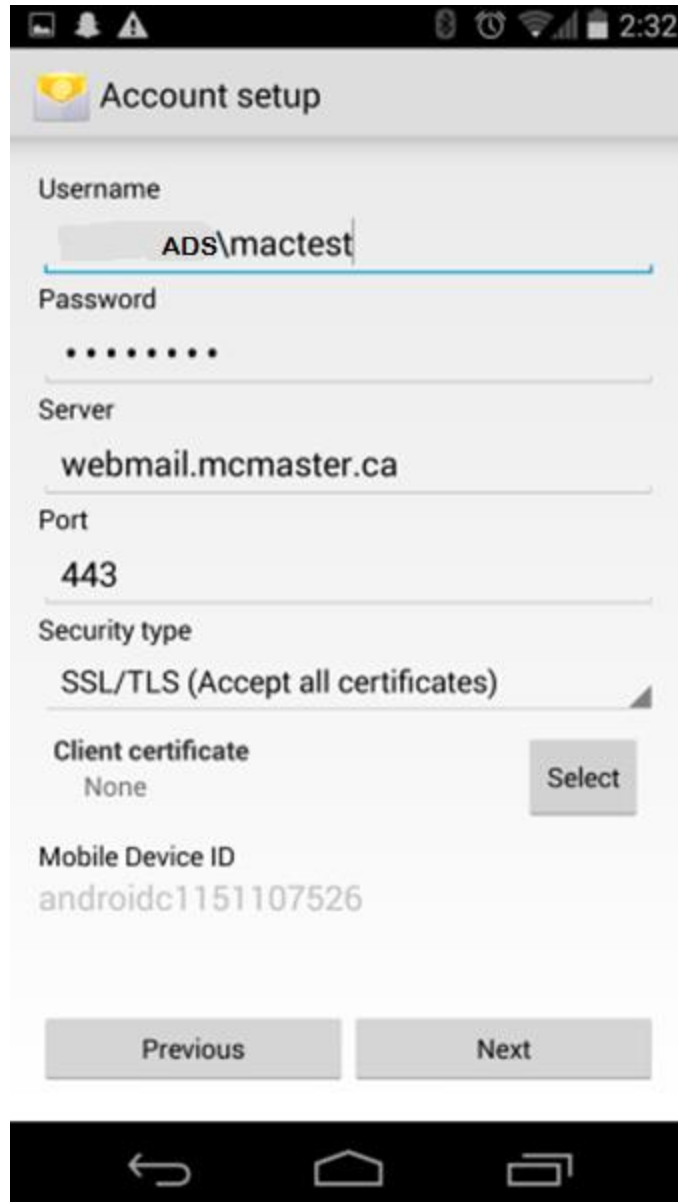


5. Choose **Exchange** for the Type of Account

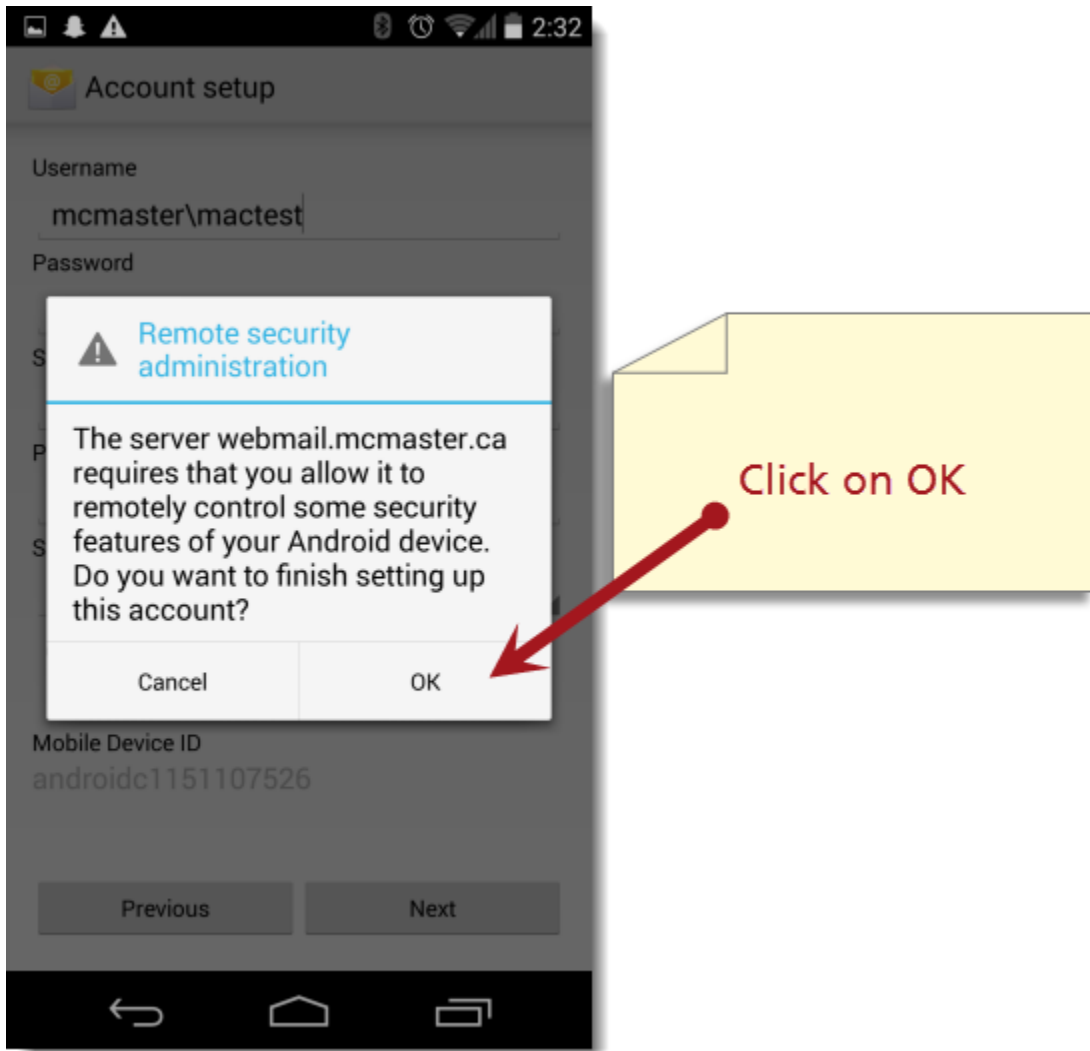
Choose Exchange



Fill out the fields and click on **Next** at the bottom



**You will receive a message about security features, click OK.**



6. On the next screen ensure that your choices are checked off, and click on **Next**.

